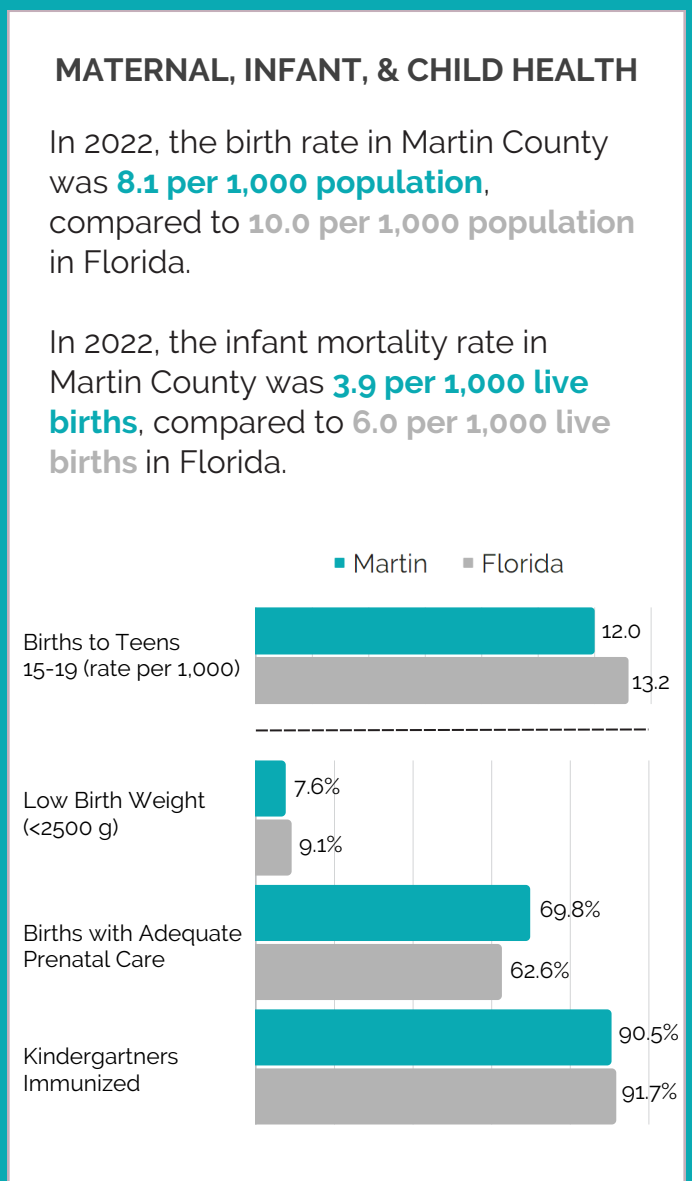
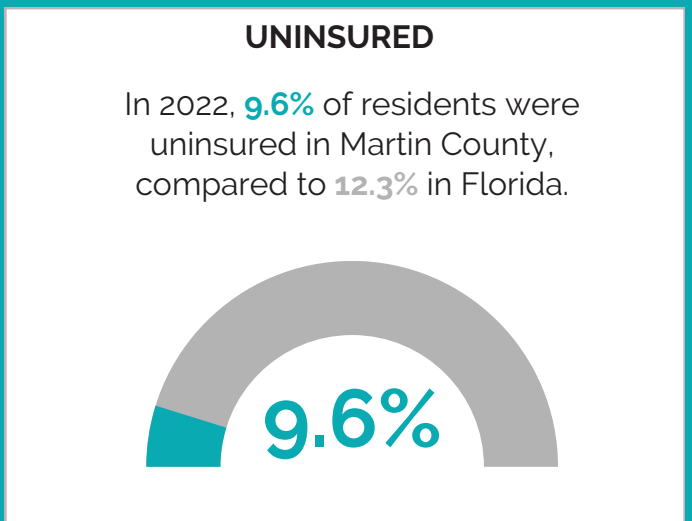
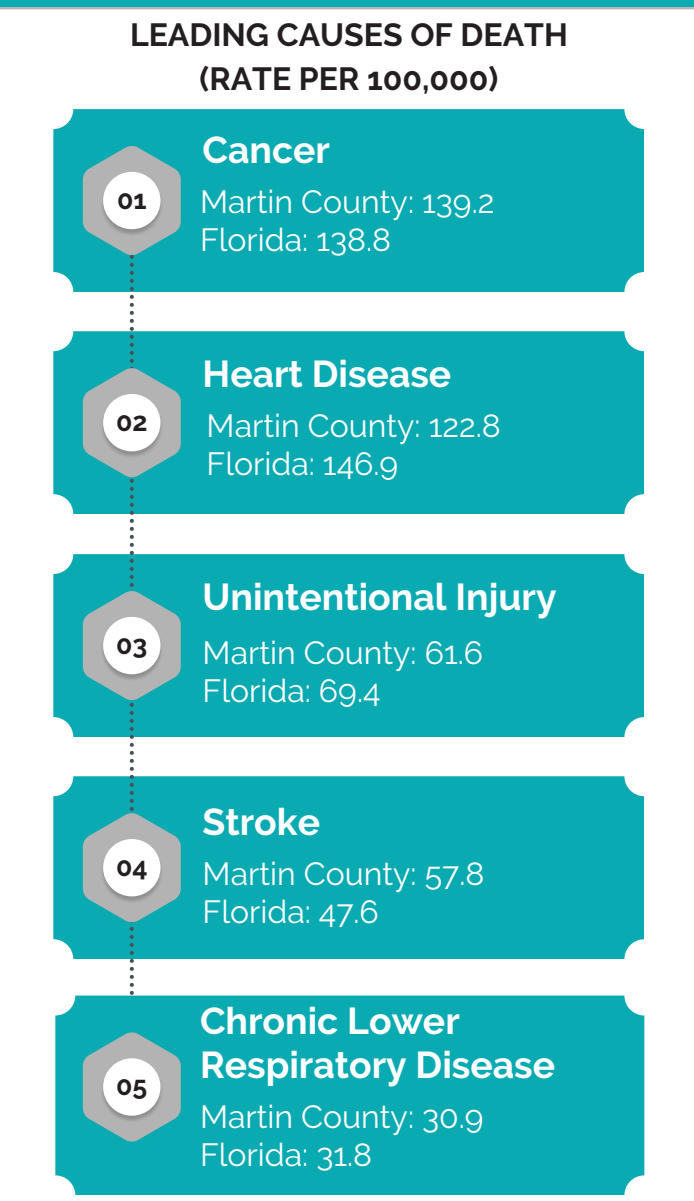
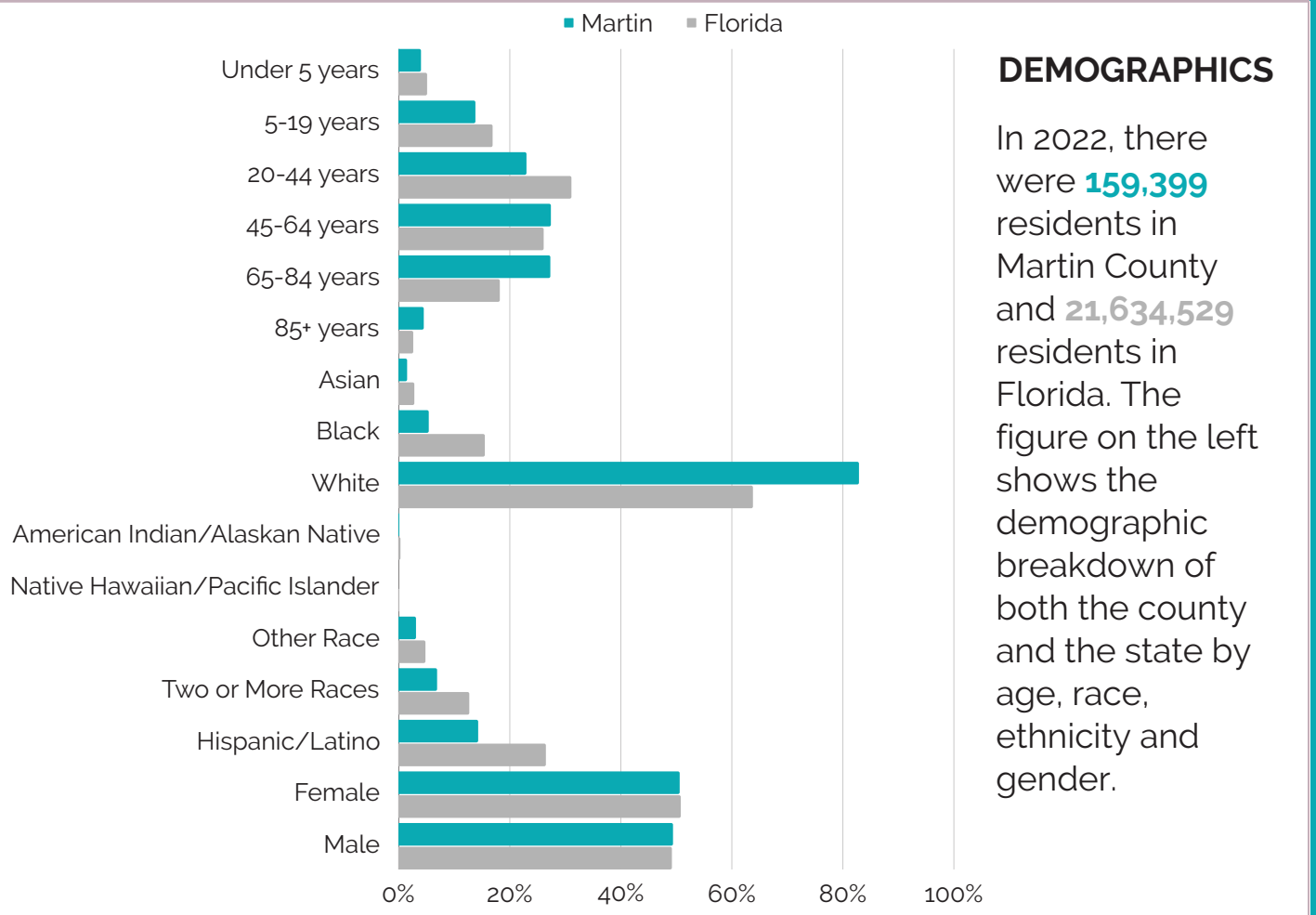


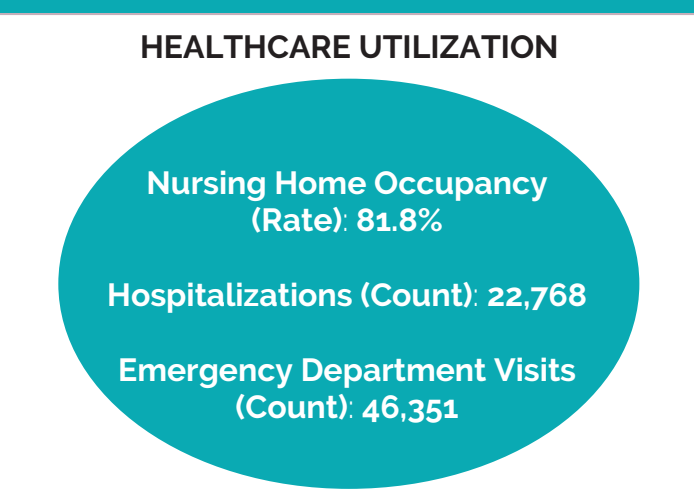
COUNTY HEALTH PROFILE 2024

Martin County



SOCIOECONOMICS

Indicator	Martin	Florida
Per Capita Income	\$50,748	\$38,850
Median Household Income	\$77,894	\$67,917
Families Below Poverty Level	6.5%	9.1%
Unemployment	4.4%	5.0%
H.S. Graduate or Higher	92.4%	89.3%
Bachelor's Degree or Higher	35.1%	32.3%
PK-12 Students Eligible for Free / Reduced Lunch	53.4%	71.3%



- HEALTH PROFESSIONAL SHORTAGE AREAS AND MEDICALLY UNDERSERVED AREAS/POPULATIONS**
- Primary Care**
Indiantown Service Area; Martin Correctional Institution; Florida Community Health Centers, Inc.
 - Dental Health**
Indiantown; Martin Correctional Institution; Florida Community Health Centers, Inc.
 - Mental Health**
Indiantown Service Area; Martin Correctional Institution; Florida Community Health Centers, Inc.
 - Medically Underserved**
Indiantown Service Area (Primary Care)